



**BUILDING A
BETTER
TOMORROW**

LAXMI NIVAS

Kompally



**Bringing international construction
experience to Hyderabad.**

Safety • Quality • Innovation • Sustainability



**Our innovative approach
to design & construction
today will shape the
future of tomorrow.**





Premium 3 Bedroom Apartments at Kompally.

Area: 650 sq yds

Floors: G+5

Units: 10 Units

Per Floor: 2 Units



Bedrooms: 3BHK

Area:

- Unit A (East Facing): 1564 sq ft
- Unit B (West Facing): 1497 sq ft

Possession: October 2023





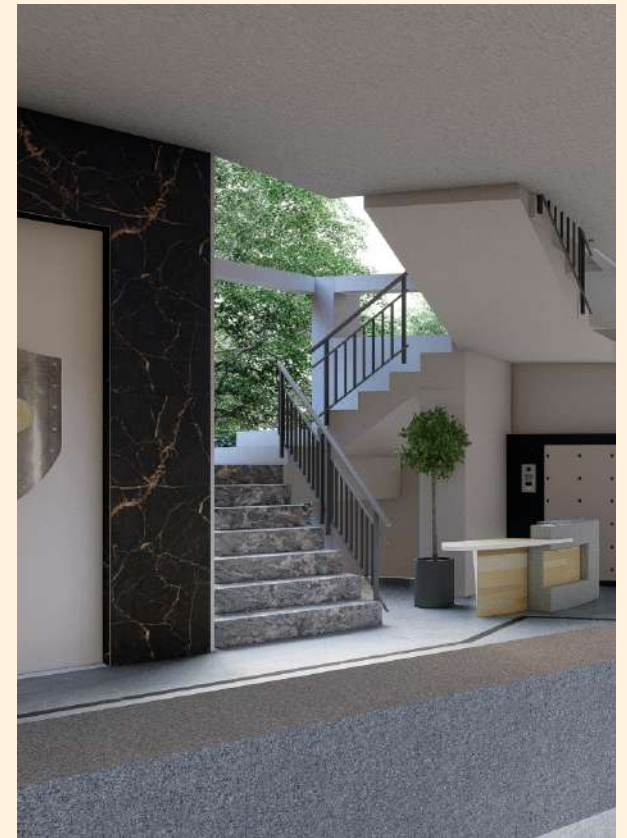
2D Floor Plan



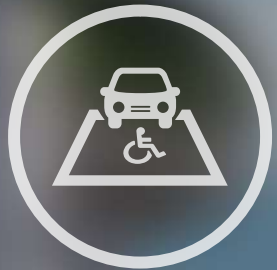


3D Floor Plan

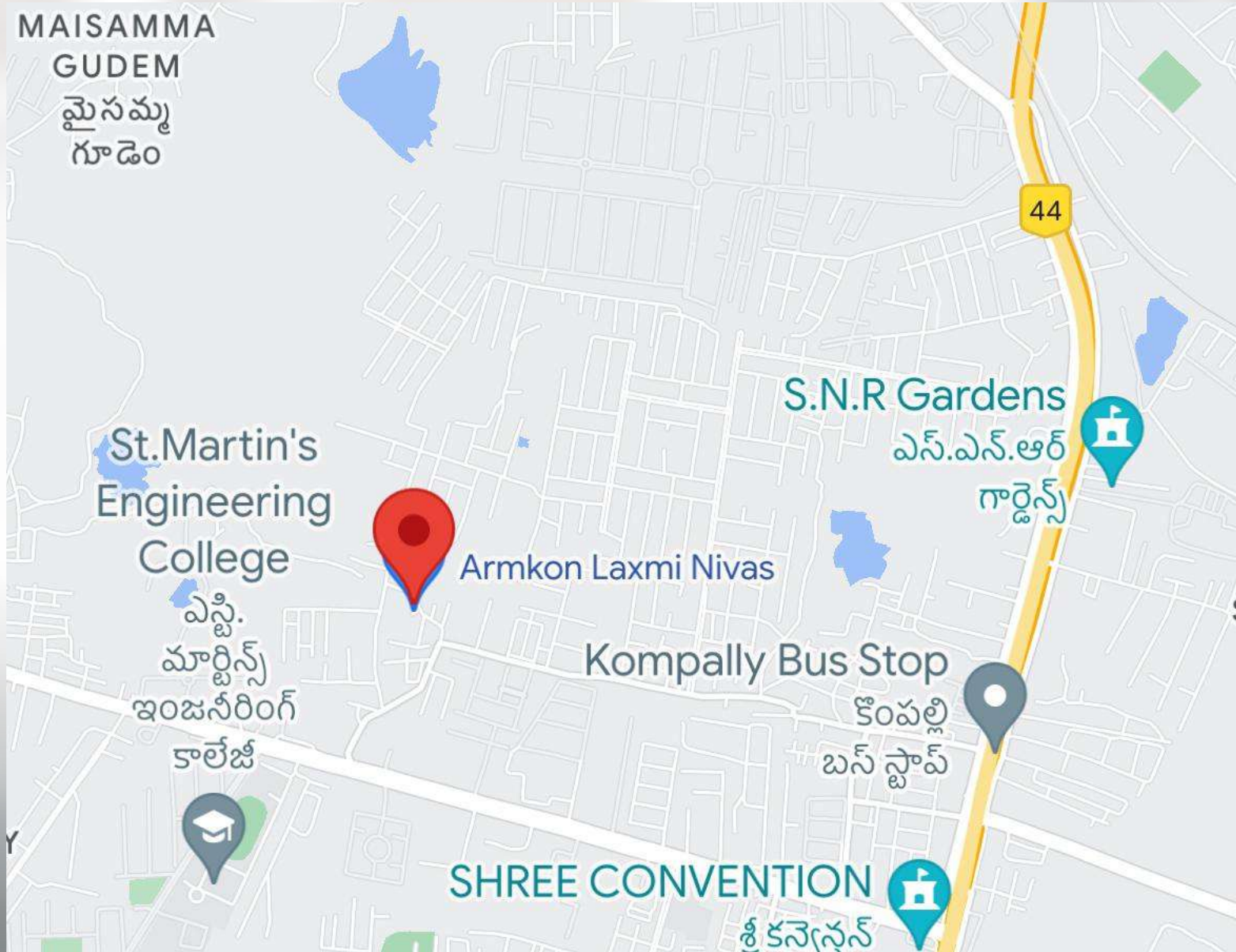
A Vastu-compliant floor plan, with a lot of emphasis given to ventilation and common utility spaces.



- EV charging slots at every parking spot
- Code compliant set back allowing a complete drive around in the parking area
- Dedicated handicap-accessible parking and ramps
- Seating area in common areas
- CCTV and intercom facilities
- Open lobbies on each floor
- Dedicated Guest parking
- Designated bike parking
- Dry-wet zone toilets
- Landscaping



<p>FOUNDATION & STRUCTURE R.C.C framed structure design conforming to IS standard of earthquake resistance.</p>	<p>FLOORING Living, Drawing, Dining: 600 x600mm vitrified tiles of reputed make. Bedrooms & Kitchens: 600x600mm vitrified tiles of reputed make. Sit outs/Balcony: Anti-skid ceramic matt finished tiles. Staircase: Polished natural stone with SS railing. Corridor: Matt finish vitrified tiles/granite tiles. All above as per architectural design.</p>	<p>TELECOM & INTERNET T.V. points in living & master bedroom, Telephone points in living and master bedroom & provision for internet & Wi-Fi connection.</p>
<p>SUPER STRUCTURE Solid/ Red Bricks - External walls 8"/9" and internal walls 4"</p>	<p>KITCHEN Granite kitchen platform with stainless steel sink (provided at extra cost), ceramic tiles wall cladding up to a height of 2' above the kitchen platform. Provision for Aqua Guard.</p>	<p>BACKUP GENERATOR Generator power back up for common usage and 2 fans, 2 lights for 3 BHK.</p>
<p>PLASTERING External and internal - 2 Coats of cement plastering with sponge finish.</p>	<p>TOILETS Walls: Glazed ceramic tile up to 8' Sanitaryware: Western-style commodes with health faucet. Jaquar or equivalent make. Fittings: Wall mixture with overhead shower and other taps of Jaquar or equivalent make. Provision for geyser and exhaust fan fitting in all bathrooms.</p>	<p>SECURITY Surveillance Cameras in lobbies of each floor.</p>
<p>WALL FINISHES External: Painted with weatherproof paints of Asian or equivalent make per architectural design. Internal: Smooth putty finish with emulsion paint of reputed make over a coat of primer.</p>	<p>UTILITY & WASH AREA Ceramic tiles up to 3' height. Flooring with anti-skid acid resistant tiles. Provision for washing machine.</p>	<p>WATER SUPPLY Underground storage Pumps with pumping system and overhead tanks.</p>
<p>DOORS & WINDOWS Main Door: Manufactured teak wood door frame and laminated paneled shutter. Polish with good quality hardware. Internal Doors: Manufactured wood frame, designed skin doors of reputed make. Windows: UPVC windows of reputed make with clear glass.</p>	<p>ELECTRICAL Concealed copper wiring (in conduits) of standard make. Modular switches of Anchor or equivalent make. Power outlets for air conditioners in living & all bedrooms. Power points for geysers and exhaust fans in all bathrooms.</p>	<p>ELEVATOR 1 lift of Johnson / Otis or equivalent make.</p>



Location Map

In the heart of the city, close to everything your heart desires

RERA Number: P02200005566

GST No.: 36AAUCA1712A1Z2



+(91) 9701238679



armkonconstruction@gmail.com



www.armkon.com

